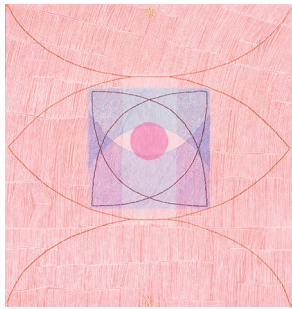


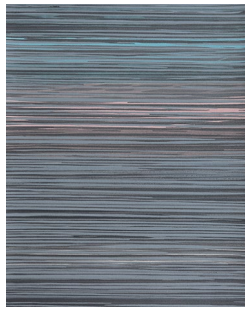


# Eventide

An exhibition of relief printmaking by Australian artists



**Elizabeth Banfield**  
*The pale light assemblage* 2015  
 linocut, kozo tissue and thread 40 x 38 cm  
[www.elizabethbanfield.com.au](http://www.elizabethbanfield.com.au)



**T J Bateson**  
*Urban Dusk* 2016  
 linocut 48 x 38 cm  
 represented by Tacit Contemporary Art  
[www.tjbateson.com.au](http://www.tjbateson.com.au)



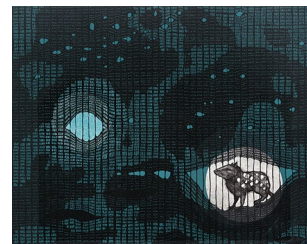
**G W Bot**  
*Glyphs - the Ancients* 2016  
 linocut 48 x 38 cm  
 represented by Australian Galleries



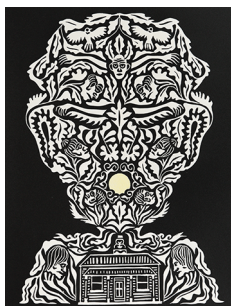
**Jazmina Cininas**  
*Grace feels herself shiver with the setting of the sun* 2016  
 reduction linocut 30.4 x 41.6 cm  
 represented by Port Jackson Press  
[www.jazminacininas.com](http://www.jazminacininas.com)



**Paul Compton**  
*Half light, half life* 2015  
 hand coloured woodcut 48 x 38 cm  
[www.paulcompton.net](http://www.paulcompton.net)



**Annette Cook**  
*Night Veil* 2016  
 linocut and etching 38 x 48 cm  
[www.annettecookartist.wordpress.com](http://www.annettecookartist.wordpress.com)



**Philip Faulks**  
*Brunswick Bedtime* 2016  
 hand coloured linocut 38 x 28 cm  
[philipfaulks.com](http://philipfaulks.com)



**Tama tk Favell**  
*Bat/pekapeka* 2015  
 linocut 48 x 38 cm  
[tamatkfavell.com](http://tamatkfavell.com)



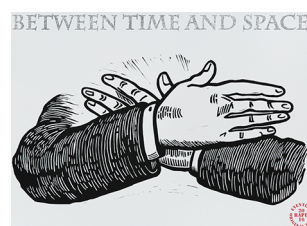
**Dianne Fogwell**  
*Anticipation* 2015  
 linocut 48 x 38 cm  
 represented by Beaver Galleries and Port Jackson Press  
[www.diannefogwell.com.au](http://www.diannefogwell.com.au)



**Rodney Forbes**  
*Chats Crépusculaires* 2015  
 linocut 38 x 48 cm  
 printed by Susan Hall  
 represented by Australian Galleries



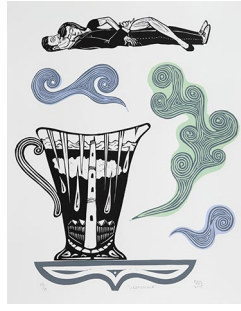
**Andrew Gunnell**  
*Near Connewarre* 2016  
 linocut 38 x 48 cm  
[andrewgunnell.com.au](http://andrewgunnell.com.au)



**Richard Harding**  
*Eventide: between time and space* 2016  
 linocut, acrylic and flocked glitter 38 x 48 cm  
[richardharding.com.au](http://richardharding.com.au)



**Rew Hanks**  
*Night Flight* 2016  
linocut 42 x 32 cm  
represented by Nicholas Thompson Gallery



**Bill Hay**  
*Crepuscule* 2015  
linocut 48 x 38 cm  
represented by fortyfivedownstairs



**Euan Heng**  
*Make-believe* 2016  
linocut 21.5 x 21.5 cm irregular  
represented by Niagara Galleries



**Kate Hudson**  
*Powerful Owl and Plum* 2015  
multiblock reduction linocut 27 cm diameter  
[www.katehudsonprintmaker.com](http://www.katehudsonprintmaker.com)



**Clare Humphries**  
*Only the light you give to me* 2016  
hand burnished linocut 38 x 48 cm  
[clarehumphries.com](http://clarehumphries.com)



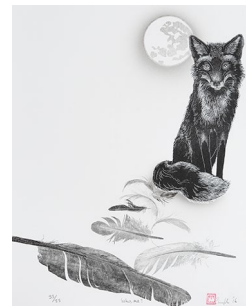
**Deborah Klein**  
*Cossodes lyonetii Moth Woman* 2016  
hand coloured linocut 32 x 30 cm  
printed by Bill Young  
[www.deborahklein.net](http://www.deborahklein.net)



**Anita Laurence**  
*Venus and Jupiter 2nd July* 2015  
reduction linocut 36.5 x 28 cm  
[anitalaurence.com.au](http://anitalaurence.com.au)



**Aaron McLoughlin**  
*Eat Metal* 2016  
linocut 38 x 48 cm  
printed by Rona Green



**Rhyll Plant**  
*Who, me?* 2015  
wood engraving, monotype and airbrush 36 x 32 cm irregular



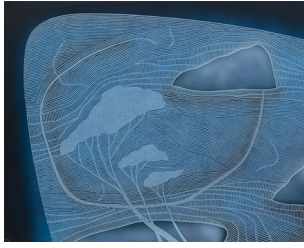
**Fleur Rendell**  
*Sundowners* 2015  
hand coloured linocut 26 x 40 cm irregular  
represented by Australian Galleries  
[www.fleurrendell.com](http://www.fleurrendell.com)



**David Rosengrave**  
*Diamond Bay Twilight* 2015  
linocut 38 x 48 cm  
[www.davidrosengrave.com](http://www.davidrosengrave.com)



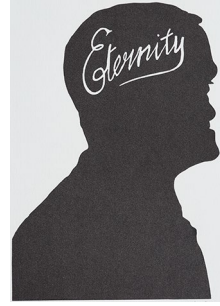
**Heather Shimmen**  
*Night Vision* 2015  
hand coloured linocut 48 x 38 cm  
represented by Australian Galleries



**Melissa Smith**  
*Tidal Sweep Study* 2016  
linocut 38 x 48 cm  
represented by Handmark Gallery  
[www.melissasmith.net.au](http://www.melissasmith.net.au)



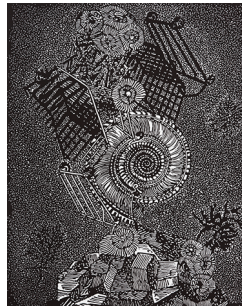
**Anne Starling**  
*Hilda and Paddy* 2015  
linocut and woodblock 30 x 40 cm  
represented by Port Jackson Press



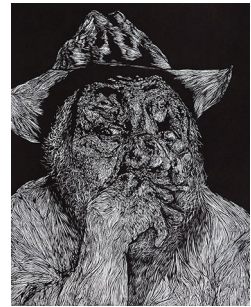
**Clayton Tremlett**  
*The enigma of darkness, a tribute to Mr Eternity* 2016  
linocut 28 x 19 cm  
[claytontremlett.com](http://claytontremlett.com)



**Deborah Williams**  
*Noire* 2015  
hand coloured linocut 38 x 48 cm  
represented by Australian Galleries  
[www.deborahwilliams.com.au](http://www.deborahwilliams.com.au)



**Helen Wright**  
*Eventide - Clean Up Australia Day* 2016  
woodcut 48 x 38 cm  
represented by Niagara Galleries and Bett Gallery



**Keren Zorn**  
*Man Eight* 2015  
linocut 48 x 38 cm  
represented by Queenscliff Gallery & Workshop  
[www.facebook.com/Keren.Zorn](http://www.facebook.com/Keren.Zorn)

**Eventide - print exchange**

An exhibition of relief printmaking by Australian artists  
Curated by Rona Green

13 May - 3 July 2016

Mornington Peninsula Regional Gallery  
Civic Reserve, 350 Dunns Road, Mornington VIC 3931  
03 5975 4395  
[mprg.mornpen.vic.gov.au](http://mprg.mornpen.vic.gov.au)  
Open Tuesday - Sunday 10am-5pm

Catalogue published by Rona Green  
Photography by Tim Gresham  
Images © the artists

Exhibition framing by Neo Frames

Cover image:

**Rona Green**  
*Ugo* 2016  
hand coloured linocut 38 x 48 cm  
represented by Australian Galleries  
[www.ronagreen.com](http://www.ronagreen.com)

Notes:

All works printed on paper size 38 x 48 cm in editions of 33 by the artist unless otherwise specified  
Dimensions listed are image size height by width in centimetres

Rona Green wishes to thank the artists, their galleries and Mornington Peninsula Regional Gallery for their support of this project.